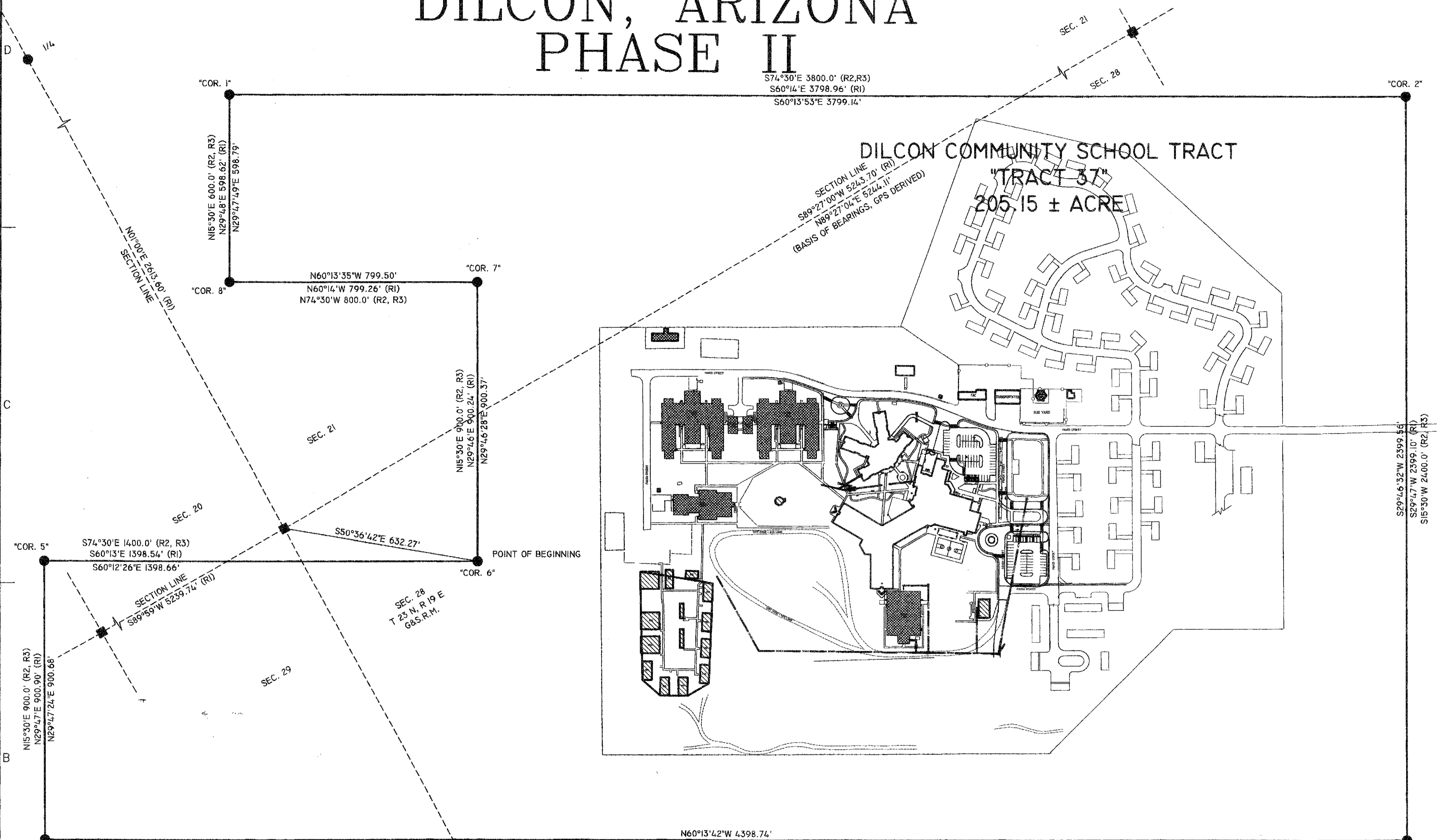


DILCON COMMUNITY SCHOOL DEMOLITION DILCON, ARIZONA PHASE II

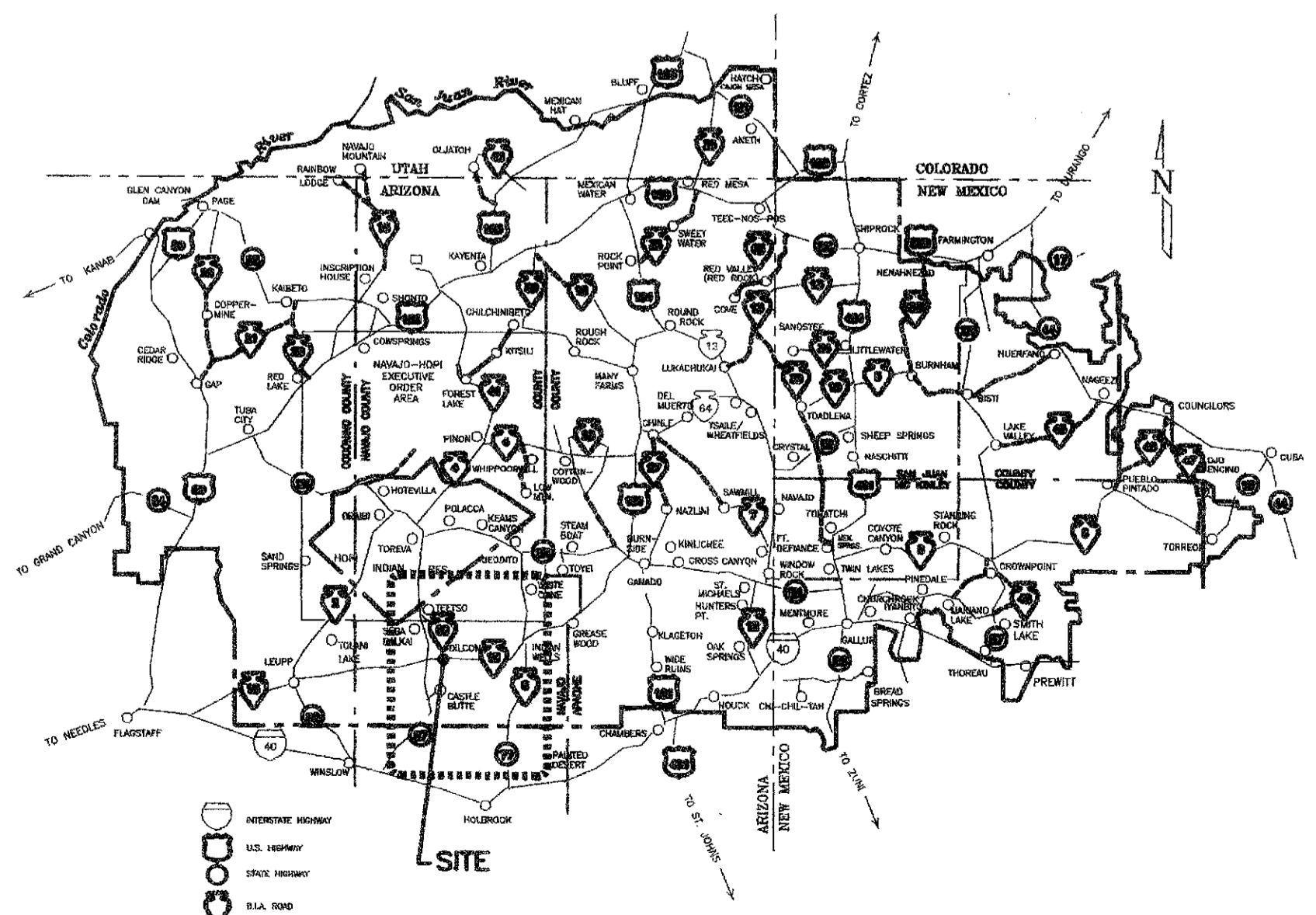


S74°30'E 3800.0' (R2,R3)
S60°14'E 3798.96' (R1)
S60°13'53"E 3799.14'

DILCON COMMUNITY SCHOOL TRACT
"TRACT 37"
205.15 ± ACRE

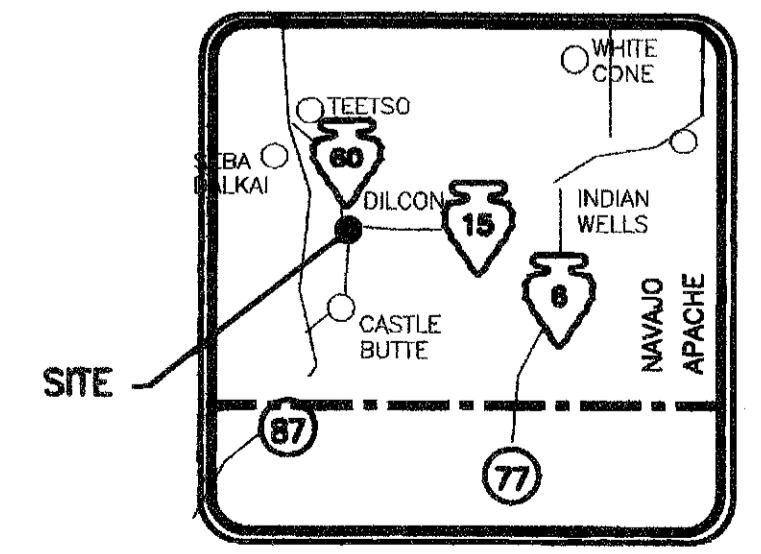
SECTION LINE
S89°27'00"W 5243.70' (R1)
N89°27'04"E 5244.11'
(BASIS OF BEARINGS: GPS DERIVED)

- *** LEGEND ***
- BARBED WIRE FENCE
 - CHAIN LINK WIRE FENCE
 - OHE — OVERHEAD ELECTRIC LINE
 - UGT/UGC — JOINT UNDERGROUND TELEPHONE/CABLE TV
 - UGT — UNDERGROUND TELEPHONE LINE
 - WATER — WATERLINE
 - SEWER — SANITARY SEWER LINE
 - ⊠ — ELECTRIC TRANSFORMER
 - ⊠ — ELECTRIC RISER
 - ⊠ — TELEPHONE RISER
 - W.V. • — WATER VALVE
 - W.M. o — WATER METER
 - ⊠ — MARKER POST
 - ⊠ — FIRE HYDRANT
 - M.H. o — SANITARY SEWER MANHOLE
 - o — U.P. — UTILITY POLE
 - o — L.P. — LAMP POLE
 - — FOUND 4" BRASS CAP
 - — FOUND 3" BRASS CAP, RIGHT-OF-WAY MONUMENT
 - — FOUND 3 1/2" BRASS CAP, 1/4 CORNER BUREAU OF LAND MANAGEMENT
 - — FOUND 3 1/2" BRASS CAP, "SECTION CORNER" BUREAU OF LAND MANAGEMENT
 - — SET 1/2" REBAR FOR LOCAL CONTROL
 - x 4200.5 — SPOT ELEVATION
 - (REC) — RECORD PLAT (R1, R2, ETC.)



NAVAJO NATION LOCATION MAP

VICINITY MAP



PROJECT DIRECTORY

OWNER:
Dilcon Community School Inc.
HC 63 Box G (40 Mi. N. Hwy. 87)
Winslow, Arizona 86047
CONTACT: Ruben Nells, Facilities Foreman
(928) 657-3488

OWNER REPRESENTATIVE:
Pinnacle One
1620 West Fountainhead Parkway Ste. 200
Tempe, Arizona 85282
CONTACT: Tim Brand
(480) 394-0335

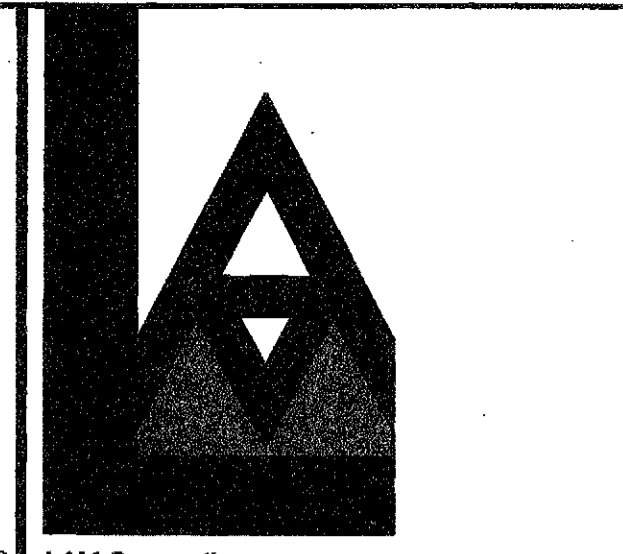
ARCHITECT:
LAM Corporation
317 Bortot Drive
Gallup, New Mexico 87301
CONTACT: Loren Miller, Architect
(505) 722-0965

ARCHITECT:
Studio Southwest Architect, Inc.
2101 Mountain Road N.W.
Albuquerque, New Mexico 87104
CONTACT: Del Dixon, A.I.A.
(505) 843-9639

ENVIRONMENTAL ENGINEER:
SHISHMAN & ASSOCIATES INC.
6501 WYOMING BLVD. NE
SUITE C-130
ALBUQUERQUE, NEW MEXICO 87109
CONTACT: TOM SHISHMAN, REM
(505) 237-9800

INDEX OF DRAWINGS

TITLE-1	TITLE SHEET
DEMO-1	ARCHITECTURAL DEMOLITION SITE PLAN
ENV-200	ABATEMENT PLAN BUILDING 200
ENV-201	ABATEMENT PLAN BUILDING 201 & 202
ENV 202	ABATEMENT PLAN BUILDING 203 & 204
ENV 202	ABATEMENT PLAN BUILDING 100



LAM Corporation
317 Bortot Drive
Gallup, NM 87301-4779
505.722.0965 fax 505.722.2057
E-Mail: lorenmiller@lamcorporation.com



STUDIO SOUTHWEST ARCHITECTS, INC.
2101 Mountain Rd. NW, Albuquerque, NM 87104
505.843.9639 fax 505.843.9663
Web Site: www.studioswarch.com
E-Mail: mail@studioswarch.com

© 2006, Studio Southwest Architects, Inc.
Duplication or reproduction by any means without the express written consent of Studio Southwest Architects, Inc. is a violation of Federal and intellectual law. The information contained on this document is the intellectual property of Studio Southwest, Inc. and all rights therein are reserved. For exceptions, refer to the Owner-Architect Agreement.

CONSULTANTS
Tom Shishman, REM
SHISHMAN & ASSOCIATES INC.
6501 Wyoming Boulevard NE, Ste. C-130
Albuquerque, NM 87109
Tel. 505.237.9800
Fax 505.797.1272

Architect Engineer
**FINAL DEMOLITION
BID SET**

**DILCON
COMMUNITY
SCHOOL**

**DEMO PHASE II
DILCON, AZ**

MARK	DATE	DESCRIPTION
ISSUE:		
PROJECT NO:	0901DD	
CAD DWG FILE:		
DRAWN BY:		
CHECKED BY:		
DATE:	06-12-09	

SHEET TITLE
**ARCHITECTURAL
DEMOLITION**
TITLE SHEET
3
TITLE 1