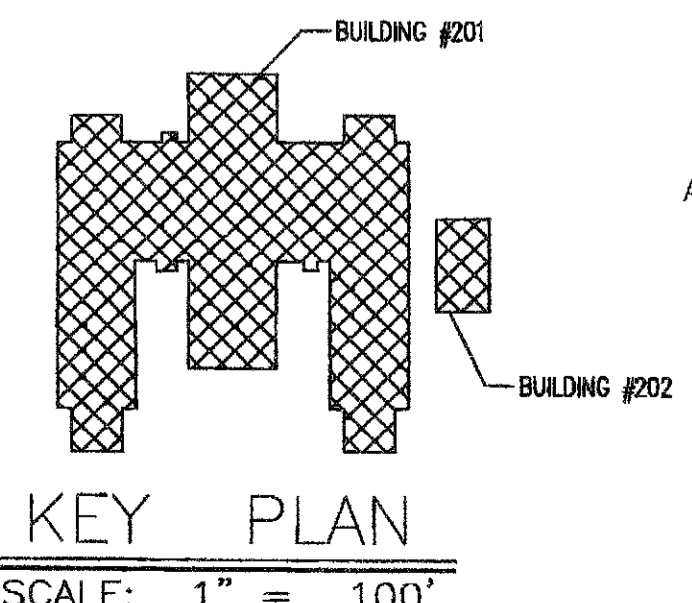
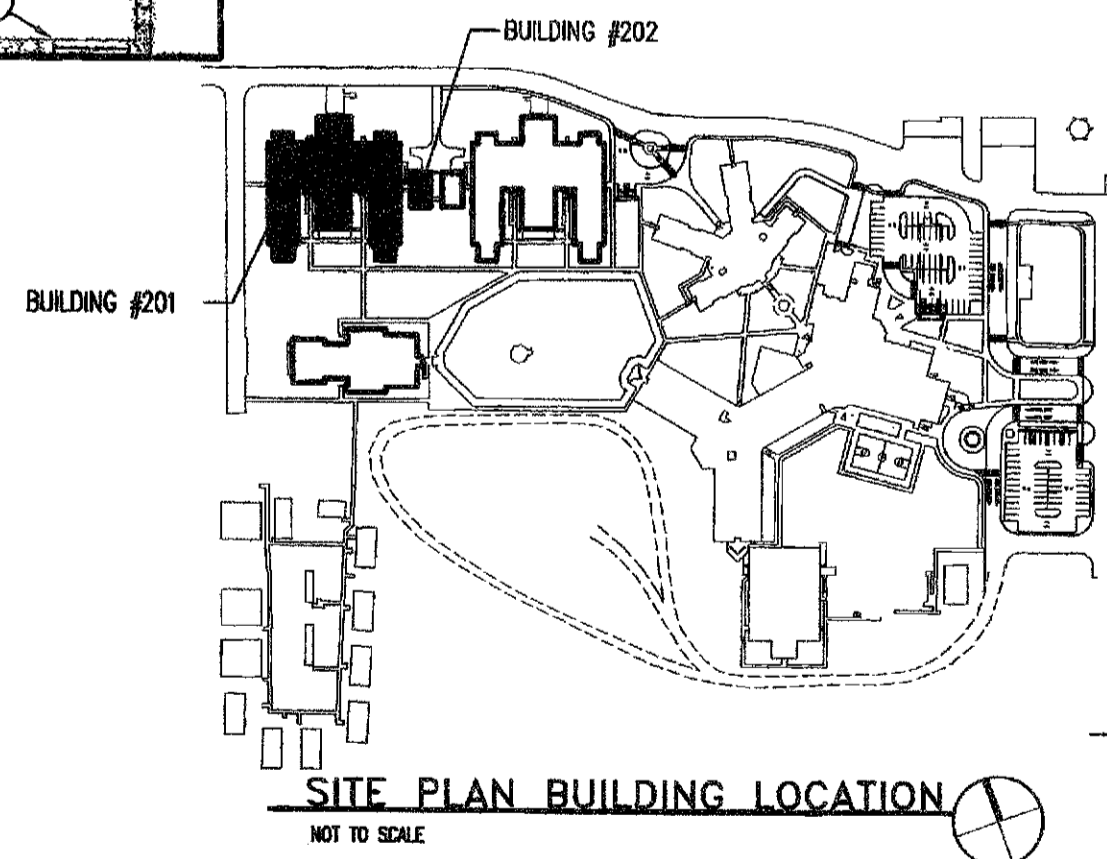
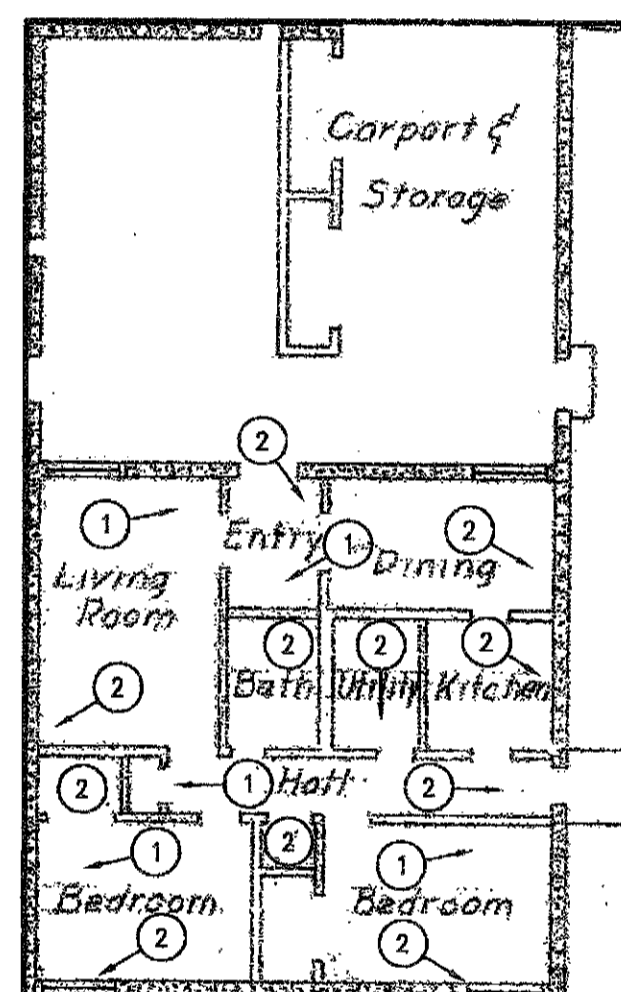


GENERAL NOTES - ENVIRONMENTAL BUILDING #202 & #201

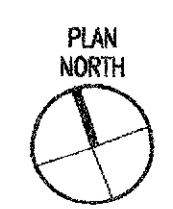
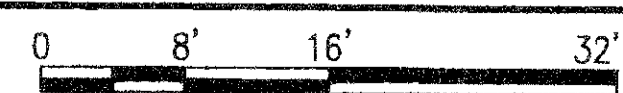
- A. CONTRACTOR SHALL REMOVE AND DISPOSE OF REGULATED ASBESTOS-CONTAINING MATERIAL TSI AS CLASS I ASBESTOS WORK, IN COMPLIANCE WITH 29 CFR 1926.1101 (OSHA WORKER PROTECTION), 40 CFR PART 61 SUBPART M (ASBESTOS NESHAP), AND PER TECHNICAL SPECIFICATIONS SECTION 13280 - ASBESTOS ABATEMENT ACTIVITIES.
- B. CONTRACTOR SHALL REMOVE AND DISPOSE OF CATEGORY I AND CATEGORY II NONFRIABLE ASBESTOS-CONTAINING MATERIALS (ACMS) AS CLASS II ASBESTOS WORK PER TECHNICAL SPECIFICATIONS SECTION 13280 - ASBESTOS ABATEMENT ACTIVITIES.
- C. CONTRACTOR SHALL DEMOLISH, REMOVE AND DISPOSE OF BUILDING COMPONENTS COATED WITH LEAD-BASED PAINTS (LBPS) IN COMPLIANCE WITH 29 CFR 1926.62 (OSHA WORKER PROTECTION) AND PER TECHNICAL SPECIFICATIONS, SECTION 13281 - LEAD HAZARD CONTROL ACTIVITIES.
- D. CONTRACTOR SHALL DEMOLISH, REMOVE AND DISPOSE OF LEAD-CONTAINING MATERIALS (LCMS) IN COMPLIANCE WITH 29 CFR 1926.62 (OSHA WORKER PROTECTION) AND PER TECHNICAL SPECIFICATIONS, SECTION 13281 - LEAD HAZARD CONTROL ACTIVITIES.
- E. CONTRACTOR SHALL REMOVE AND DISPOSE OF PCB-CONTAINING BALLASTS FROM FLUORESCENT LIGHT FIXTURES PER APPLICABLE FEDERAL, STATE AND LOCAL REGULATIONS.

KEYNOTES - ENVIRONMENTAL BUILDING #202 & #201

- 1. REMOVE GLUED-DOWN CARPETING FROM CATEGORY I FLOOR TILES OR MASTIC ON CONCRETE SLAB; DISPOSE OF AS ASBESTOS-CONTAMINATED MATERIAL; CLASS III ASBESTOS WORK.
- 2. REMOVE CATEGORY I FLOOR TILES AND/OR MASTIC FROM CONCRETE SLAB; CLASS II ASBESTOS WORK.
- 3. REMOVE TSI FROM ELBOWS, FITTINGS AND/OR RISERS ON FIBROUS GLASS-INSULATED PIPING IN MECHANICAL ROOM AND IN CRAWLSPACE; CLASS I ASBESTOS WORK.
- 4. REMOVE TSI FROM PIPE RUNS; CLASS I ASBESTOS WORK.
- 5. REMOVE INSULATION ON BOILER FLUE; CLASS II ASBESTOS WORK.
- 6. REMOVE AND DISPOSE OF BOILER(S) INTACT, WITH TSI MUD INSIDE; CLASS III ASBESTOS WORK.
- 7. REMOVE ACBM FIRE DOORS; CLASS IV ASBESTOS WORK.



E2 ABATEMENT PLAN - BLDG # 201 & BLDG # 202
3/32"=1'-0" 30,348 BUILDING S.F.



STUDIO SW ARCHITECTS
STUDIO SOUTHWEST ARCHITECTS, INC.
2101 Mountain Rd. NW, Albuquerque, NM 87104
505.843.9639 fax 505.843.9683
Web Site: www.studioswarch.com
E-Mail: mail@studioswarch.com

CONSULTANTS
Tom Shishman, REM
SHISHMAN & ASSOCIATES INC.
6501 Wyoming Boulevard NE, Ste. C-130
Albuquerque, NM 87109
Tel. 505.237.9800
Fax 505.797.1272
Architect Engineer

DILCON COMMUNITY SCHOOL
DEMO PHASE II
DILCON, AZ

MARK	DATE	DESCRIPTION
ISSUE:		
PROJECT NO:	0901DD	
CAD DWG FILE:		
DRAWN BY:		
CHECKED BY:		
DATE:	06-12-09	
SHEET TITLE	ABATEMENT PLAN BUILDING 201 & 202	
ENV-201		